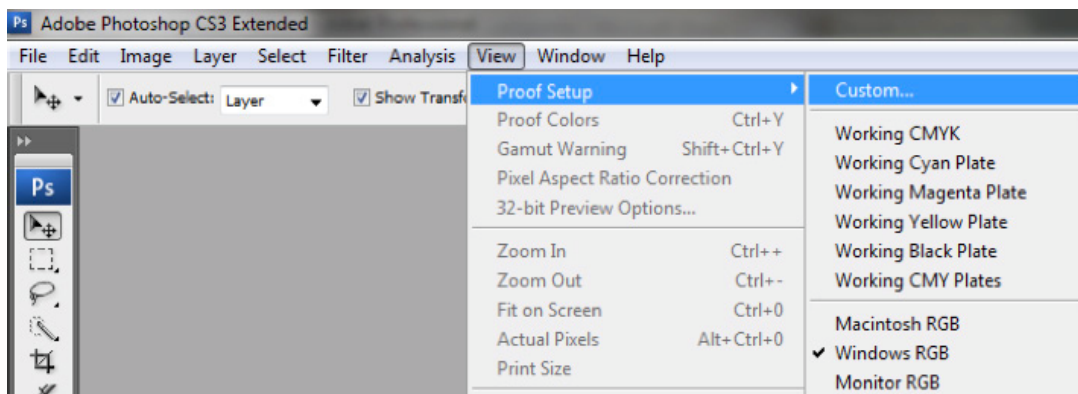


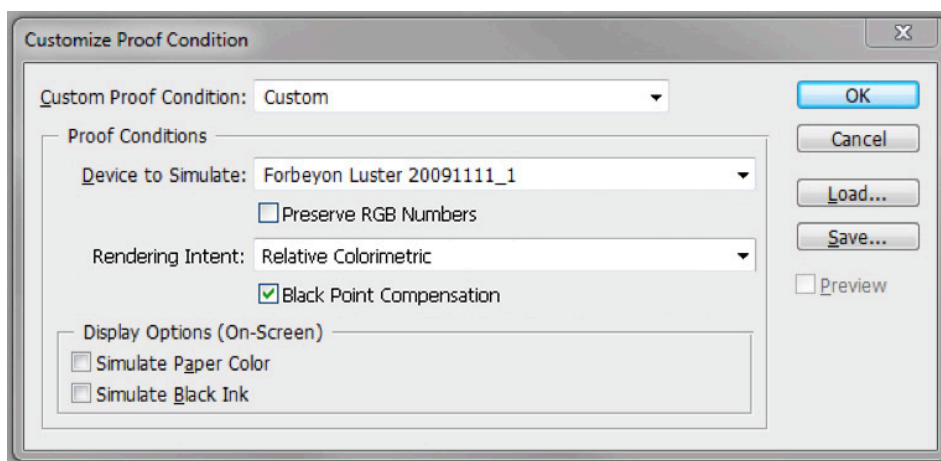
Design in sRGB format for superior color management. Forbeyon's Photographic Color Profile, used for **Photo Luster** and **Photo Metallic**, is for soft proofing, which is an on-screen preview of the printed layout. Factors such as the work environment, the lighting condition, the monitor and the monitor's current settings will affect the accuracy of the soft proof.

Setting up Forbeyon's Photographic Color Profile in Photoshop:

- Save the Photographic Print profile (xxx.icc) in your computer
 - Win 7: C:\Windows\System32\spool\drivers\color
 - Win Vista: %WINDIR%\System32\Spool\Drivers\Color
 - Win XP: windows\System32\spool\drivers\color
 - Win 2000: WINNT\System32\spool\drivers\color
 - Mac OSX:/Library/ColorSync/Profiles
- Open Photoshop
- Select **View**, in the Menu Bar
- Select **Proof Setup** --> **Custom**



- Make sure that **Custom** is selected for the **Custom Proof Condition**
- Select the xxx.icc in the Device to Simulate



- Click **Save**
- Create a **Name** for the color proof, then click **Ok**
 - We recommend naming it: **Forbeyon Luster or Metallic**

How to Soft Proof your Layouts using Forbeyon's Photographic Profile:

- Go to **View – Proof Setup**
- Click **Forbeyon Luster or Metallic**
- Use **Ctrl+Y** on our open layout to soft proof your layouts

For the highest level of proofing:

- Download the digital **Forbeyon Print Sample** file
- Request all of Forbeyon's print samples
- Contact Customer Care at: 800-540-1480 or info@forbeyon.com
- Once received, you increase the accuracy of your soft proof by:
 - In Photoshop, open the **Forbeyon Print Sample**
 - Follow the directions **How to Soft Proof your Layout**
 - Hold the printed version up to your screen

You can also manually calibrate your monitor to Forbeyon's Durst Theta 76 printer by adjusting your monitor setting so the digital proof and print version match.

- This is not recommended. It changes your monitor settings and it will affect your entire current workflow.
- If you do this, make sure you save your previous monitor settings and your monitor's Forbeyon setting. This way you can go back to your current workflow and adjust when designing a Forbeyon album.